

# Installation instruction do88 performance Radiator SAAB 900 Turbo 1979-1993

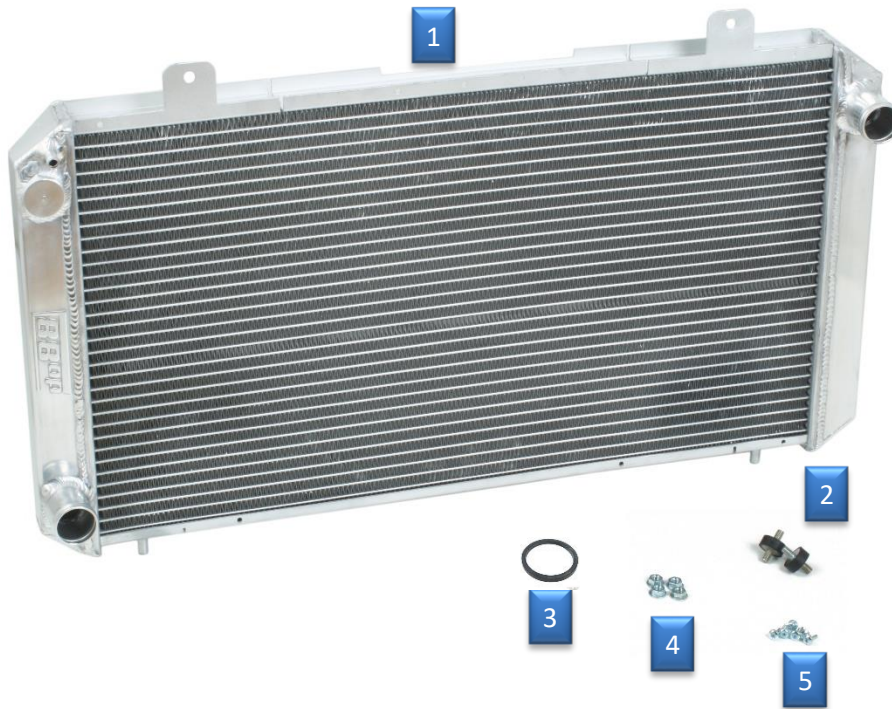
Part number: WC-260

This instruction shows how to replace the OEM radiator with do88 performance radiator.

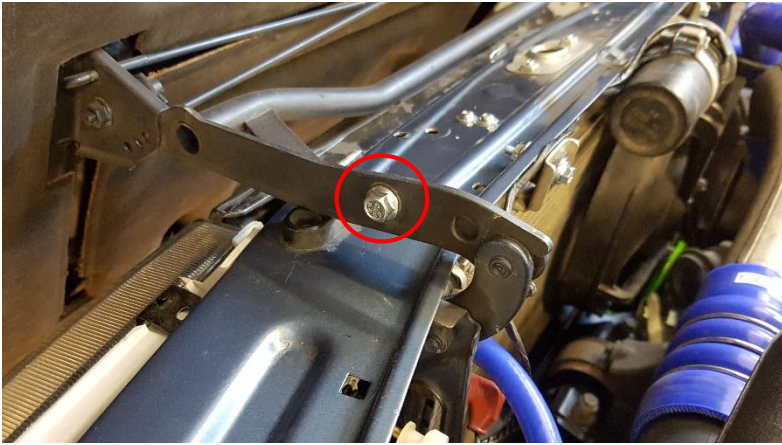
At this type of installation we always recommend that you have mechanical experience and knowledge about safety during work on vehicles.

Parts included:

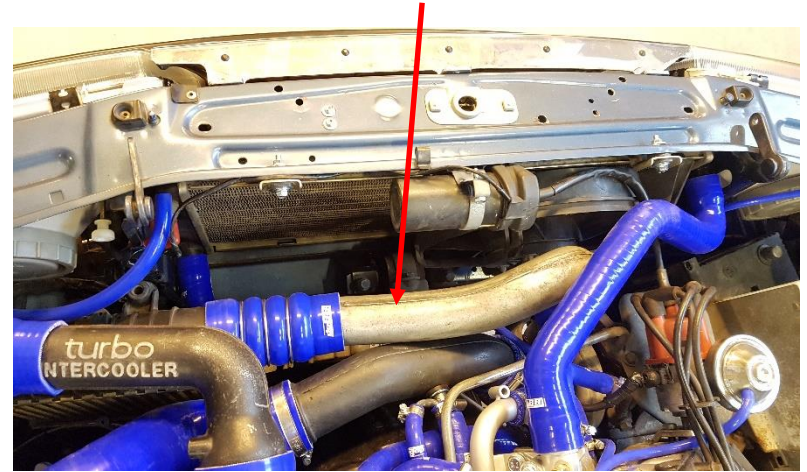
1. Performance radiator
2. 2pcs Anti Vibration Mounts
3. 1pc Thermo switch gasket
4. 4pcs M6 Nuts
5. 6pcs Metal screws



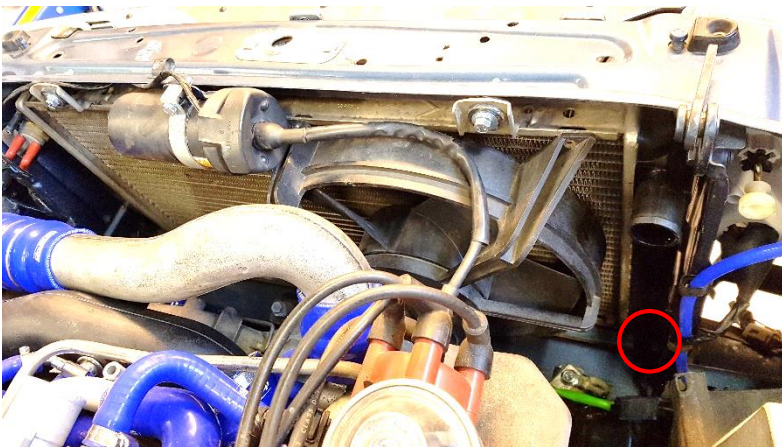
1. Remove the hood (it will make work much easier). 2x Hex 13mm and the hose to the wind shield washers.



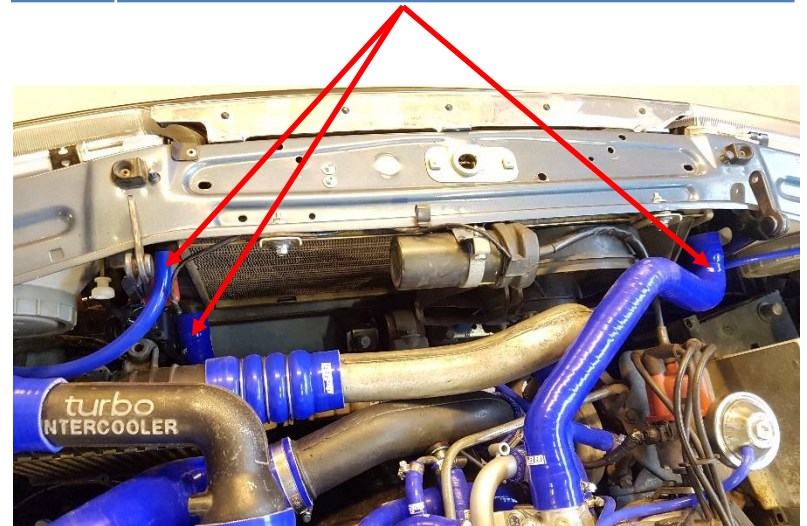
2. Remove the intercooler pipe and hoses between the Turbo -> Intercooler. Cover the turbo outlet with some cloth to avoid dirt falling into the turbo.



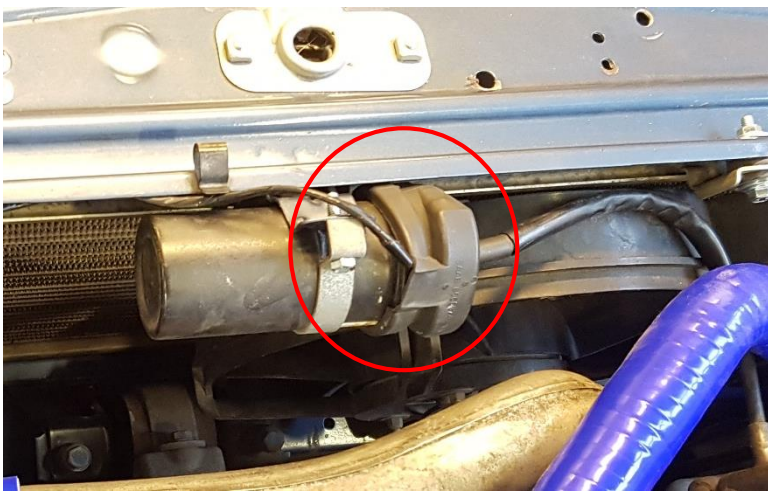
3. Drain the coolant from the radiator by removing the drain plug in the lower right corner. Important! Make sure engine is cold before doing this!



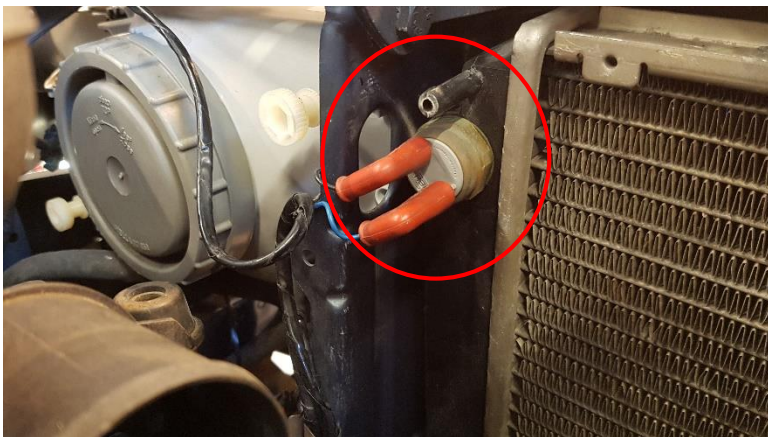
4. Disconnect all three radiator hoses.



5. Disconnect the ignition cable from the ignition coil. Then remove the ignition coil bracket. Put the ignition coil to the side.



7. Disconnect the cable connectors to the thermo switch.



6. Disconnect the cable connector to the radiator fan(s). Then remove all 3 (6) fan screws, then remove the fan(s).



8. Remove both top radiator screws. Then lift the radiator out of the car.



9.

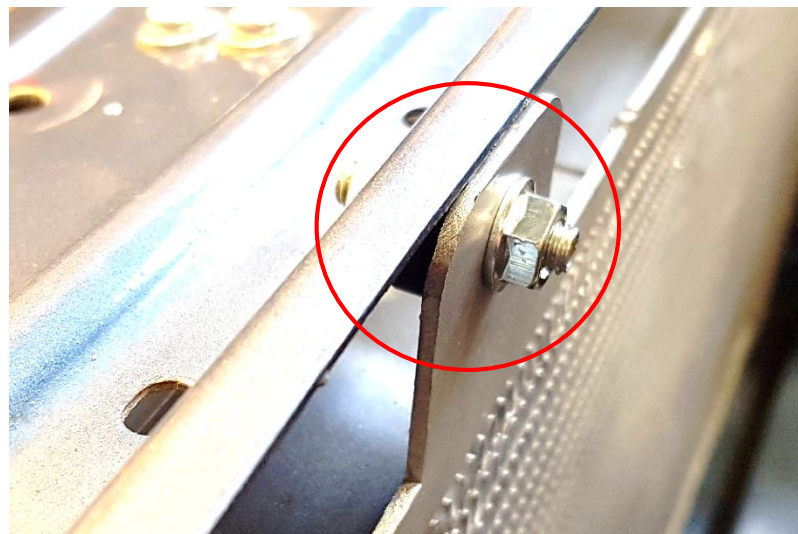
If your car has a thermos switch it must be reused in the do88 radiator:

1. Remove the thermos switch
2. Remove the old gasket
3. Put the included rubber gasket onto the thermos switch
4. Only tighten the thermos switch by hand on the do88 radiator. If you tighten with tooling to hard it will damage the sealing = leak!



10.

Install the do88 radiator into your car. Install with the included anti vibration mounts and M6 nuts according to picture on both sides.



11.

Install all other parts in reverse order.

Note. Use the included Metal screws when installing the fan(s)